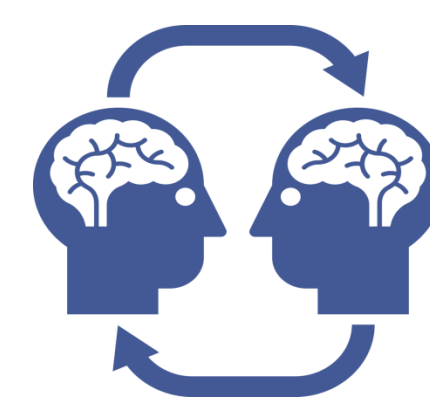


### What Are Our Goals?

- Address the challenge for optimization of service delivery and provision of equitable access to acute leukemia care in Ontario by **Cancer Care Ontario** (CCO), the province's cancer advisor
- Meet the **demand for leukemia services** in the GTA as outlined in the recommendations report – *Adult Acute Leukemia Services Plan for the Greater Toronto Area*<sup>1</sup>
- Facilitate a **shared-care model** that will optimize resource utilization and provide high quality **patient care closer to home**
- Maintain the **provision of high quality care**, while reducing the burden on centralized Princess Margaret Cancer Centre resources, where all acute and follow up care was historically provided, and travel pressures experienced by patients and their families

### How Do We Do This?

#### EDUCATION AND PROFESSIONAL ENGAGEMENT:



- Collaborative planning to define program framework and supporting infrastructure needs
- In-Person Training Day for physicians, nurses and pharmacists
- One-on-One mentorship for peer clinicians
- Site visits and job shadowing

#### ONLINE RESOURCES:



- ListServ for collaborative discussion
- SharePoint website to provide clinical tools, contact information and communication channels
- Record sharing strategies

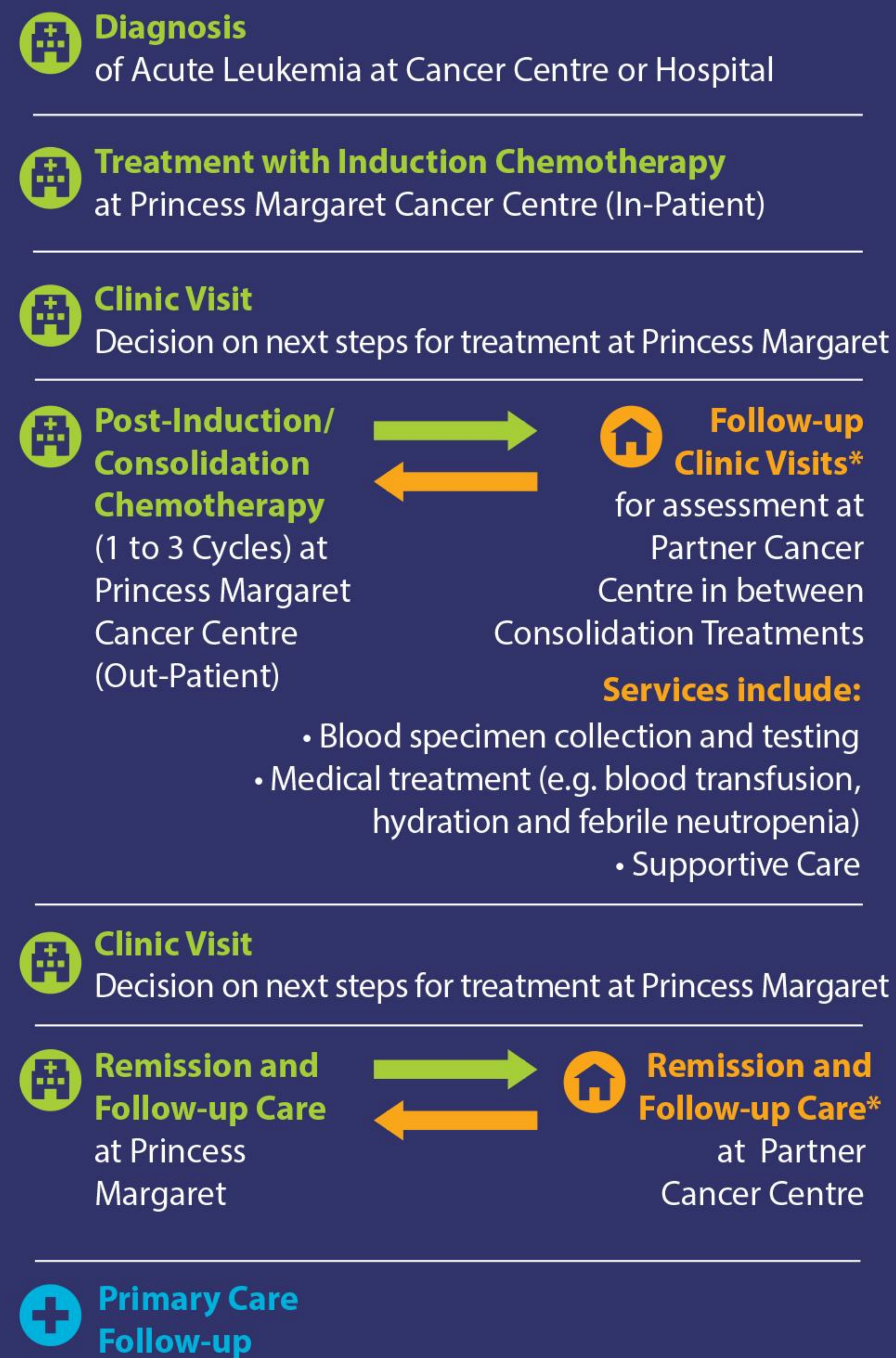
#### PATIENT MATERIALS:



- Standardized communication materials regarding the shared-care of patients
- Brochure to provide consistent language to patients and families about the Program
- Navigation tools for patients to get around Cancer Centres
- Appointment trackers to help patients organize their hospital visits
- Patient Experience Measurement Survey

### Acute Leukemia Shared-Care Program

#### Acute Leukemia Shared-Care Model



This diagram represents the shared-care model for a person with acute myeloid leukemia (AML).  
\*Components of care may be transferred back to Princess Margaret Cancer Centre depending on care needs.

Diagram displays where patients will receive components of care in the Shared-Care Program

#### LEGEND:

- Princess Margaret Cancer Centre
- Partner Cancer Centre
- Primary Care Follow-up



Providing better care – together

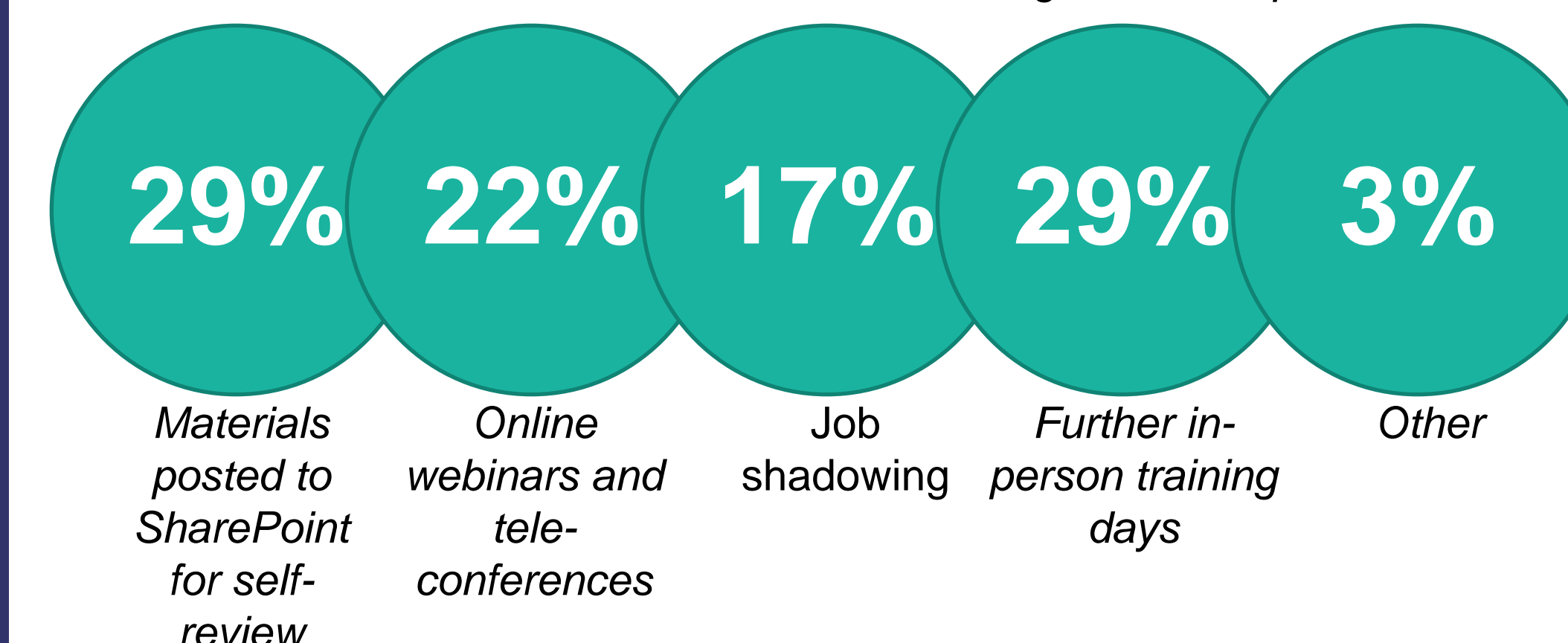
Acute Leukemia Shared-Care Program

Patient resources, such as the Acute Leukemia Shared-Care Program brochure have been developed to ensure consistent messaging about the Program to patients and their families

#### Training Day

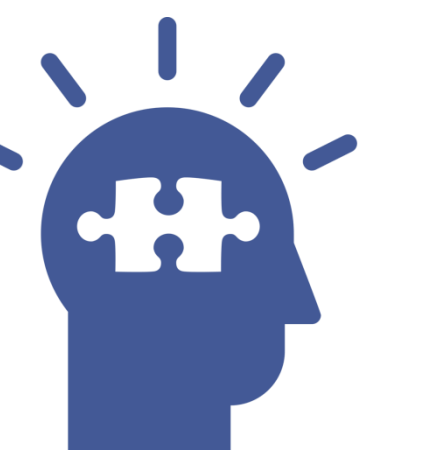
- Evaluation results show that attendees found this event useful with positive overall impressions
- **72%** of respondents strongly agreed that the content was organized, easy to follow and that the quality of instruction was good
- Overall, **78%** rated the Training Day as excellent

Preferences for how further information and training should be provided:



### Implementation Challenges

- Securing **buy-in** from multiple stakeholders
- Developing an appropriate **funding approach**
- Time **commitment** of external partners to develop Program elements



### Moving Forward

- CCO will continue to work with **regional partners** to provide additional support
- Learnings from the Program will serve as a **platform for future enhancements** and expansion
- Evaluation strategies will look at coordination of care from both the **patient and provider perspectives**, as well as uptake and resource utilization

### References

- 1) Acute Leukemia Steering Committee (2011). *Adult Acute Leukemia Services Plan for the Greater Toronto Area*. Available at [www.cancercare.on.ca/specialized\\_services](http://www.cancercare.on.ca/specialized_services).

### Acknowledgements

We would like to thank the members of the Acute Leukemia Implementation Steering Committee for their hard work which led to the development of the Acute Leukemia Shared-Care Program.

The Acute Leukemia Shared-Care Program is a collaborative effort between Cancer Care Ontario and:



More information on the Acute Leukemia Shared-Care Program is available at

[www.cancercare.on.ca/specialized\\_services](http://www.cancercare.on.ca/specialized_services)

"Skill Share" icon by Iconathon, "Computer" icon by James Keuning, "Map" icon by factor[e] design initiative "Problem Based Learning" icon from Duke Innovation Co-Lab from theounproject.com.