

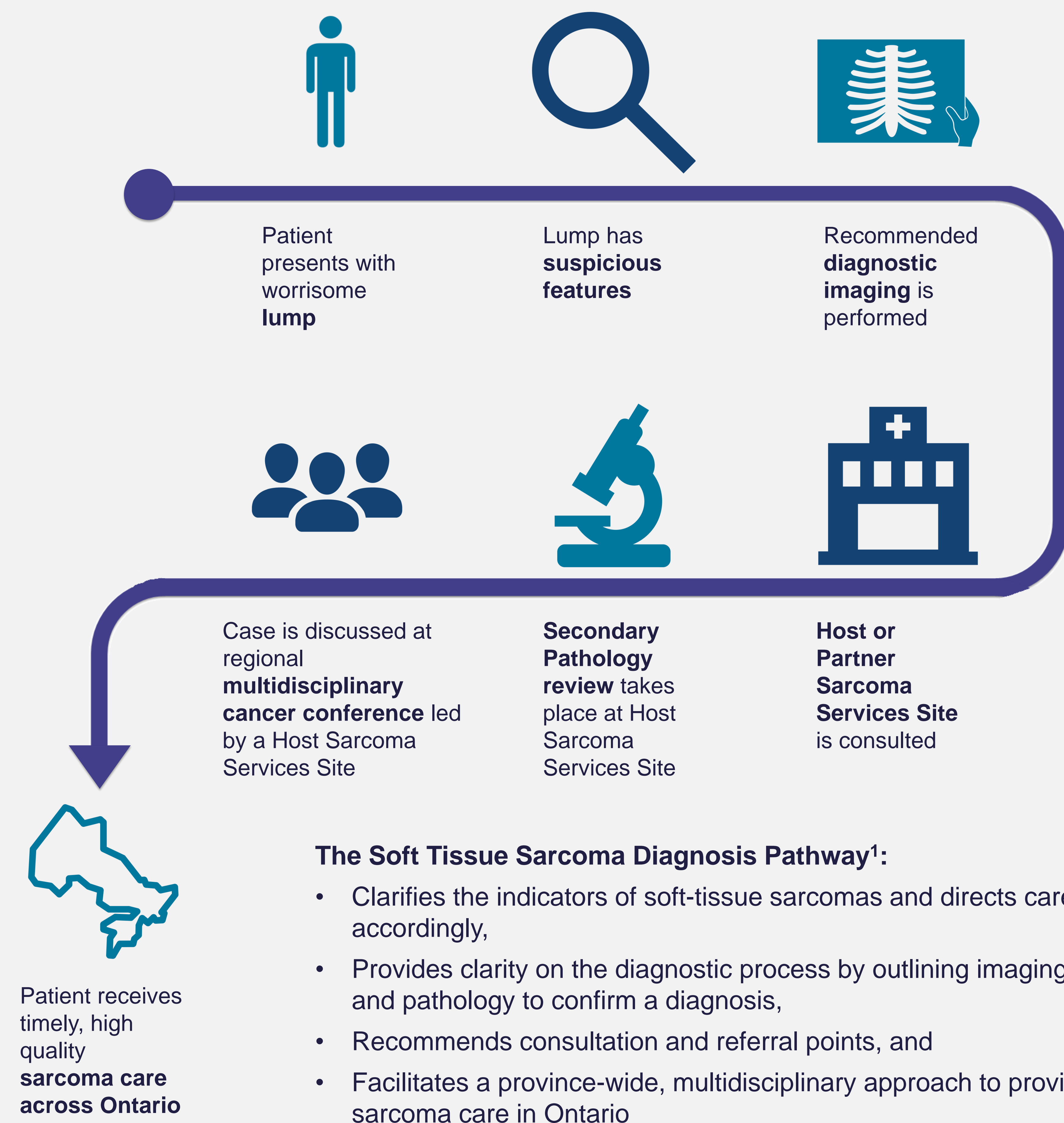
## Why Did We Do This?

- Cancer Care Ontario developed the **Provincial Sarcoma Services Plan** which provides an overview of how adult sarcoma services are organized in Ontario.
- Sarcomas are rare, affect all age groups and may arise in any part of the body. In Ontario, there are approximately **1,000 adult cases** of bone and soft tissue sarcomas annually.
- Appropriate investigation, management and rehabilitation of patients with sarcoma require a **high degree of coordination** among healthcare disciplines.
- **Timely and appropriate referral** is needed to prevent misdiagnosis, delayed diagnosis and inappropriate treatment.
- Cancer Care Ontario's Sarcoma Services Steering Committee recommended the development of a **disease pathway map** to facilitate appropriate and timely diagnosis for suspected cases of soft tissue sarcoma.

## How Did We Do This?

- A disease pathway map was chosen as it has the potential to **improve the quality** of care, while optimizing the utilization of resources.
- **Literature and jurisdictional scans** were performed to inform the initial draft.
- A **multidisciplinary working group** of clinicians (including primary care physicians, radiologists and pathologists) further developed the pathway to fit the demands of practice in Ontario.

## What Was The Outcome?



The full version of the Soft Tissue Sarcoma Diagnosis Pathway is available at [www.cancercare.on.ca/sarcomacare](http://www.cancercare.on.ca/sarcomacare).

## How Has This Work Been Shared?

Over **19,600** points of contact

- 11,421** impressions (LinkedIn)
- 7,541** impressions (Twitter)
- 80** webpage views per month (CCO)
- 17** Provincial and national associations
- 7** Cancer Care Ontario clinical groups

## Moving Forward

- An ongoing **program of education** to increase awareness is needed in order to promote accessibility, efficiency and quality care for patients with soft tissue sarcoma.
- **Quality indicators** for the Sarcoma Program will be used to measure the overall impact and implementation.

## Acknowledgements

We would like to thank the members of the Sarcoma Disease Pathway Management Working Group and the Sarcoma Services Steering Committee for their contributions to this work.

More information on the Provincial Sarcoma Services Plan can be found at [www.cancercare.on.ca/sarcomacare](http://www.cancercare.on.ca/sarcomacare)

## References

1. Sarcoma Services Steering Committee (2015). Soft Tissue Sarcoma Diagnosis Pathway. Available at [www.cancercare.on.ca/sarcomacare](http://www.cancercare.on.ca/sarcomacare).
2. Sarcoma Services Steering Committee (2015). Provincial Sarcoma Services Plan, Version 2.0. Available at [www.cancercare.on.ca/sarcomacare](http://www.cancercare.on.ca/sarcomacare).

"Person" icon by Alexander Smith, "Magnifying Glass" icon by Manav Dhiman, "People" icon by Castor & Pollux, "X-Ray" icon by Jhunn Capaya, "Microscope" and "Hospital" icons by Creative Stall, "Ontario" icon by factor[e] design initiative, from theounproject.com.

## CCO's Specialized Services Oversight Program

- Addresses the challenge for **optimization of service** delivery while providing equitable access to safe, high quality, best practice care
- Services that are low in volume, high in complexity, high in cost, not available in every Local Health Integration Network (LHIN), and involve a rapidly evolving knowledge base and high degree of specialization, are considered for this Program.
- For **best patient outcomes**, the regionalization of sarcoma services is necessary since management requires highly specialized multidisciplinary teams due to the rarity of the malignancy.

